



# Chilltainers

The future of thermal  
packaging is here

## Keep perishables cool

Chilltainers are made from specialised corrugated cardboard laminated with an impermeable reflective metallised polyester.



Keep perishables cool

---

# The future of thermal packaging

**Chilltainers are the ideal replacement for Polystyrene/EPS.**

Recyclable, thermal and space efficient durable, affordable and sustainable.



## What are Chilltainers?

Specialised 'cool' thermal packaging and boxes that replace polystyrene, with increased strength, less bulk and are recyclable.

## What are they made of?

Strong, specifically developed corrugated cardboard with a reflective impermeable metallised polyester laminate coating.

## How does Chilltainers work?

The corrugated board provides airflow and a conductive layer of packaging, while the metallised polyester laminate reflects heat away and maintains coolness inside for longer.



### Key features

## Quality Insulation

Reflective insulation technology ensures your product arrives in top condition.

## Ship Direct – Fresh

No transshipping or repacking required, maintaining cold and reducing microbial counts.

## Durable and Leakproof

No breakages, leakproof and airline approved.

## Flexible and Secure

Use ice or gel packs with your product in conjunction with a USFDA approved MetPET surface.

### A simple choice.

## Why choose Chilltainers?

- Proven thermal efficiency and temperature performance
- Highly recyclable, carbon neutral and sustainable
- Delivery can be made in non-refrigerated vehicles
- Customers love the look
- Easy to assemble, safer and healthier to handle
- Flat pack for easy make-up, storage and re-use
- Surface supports high quality graphics for branding
- Strong, don't fracture and totally leak proof - airline approved
- Space efficient, slim-line profile reduces transport and storage costs.



---

# Pretty cool savings



---

## Cost saving at every level

Producers, wholesalers, retailers, households and customers are demanding a better solution for the packaging and transport of perishable products.



---

### Cheaper Freight Costs

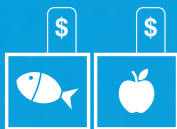
Airline approved, non-leak Chilltainers mean direct shipping from producer to retailer. No repacking saves time and money.



---

### Space Efficient

Chilltainer's slimline profile means you can fit more product in each box and more boxes in each transport container.



---

### Retail-Ready

Chilltainers carries your product to customers, stylishly and effectively.



---

### Recyclable

Chilltainers are 95-97% recyclable in standard paper recycling. Eliminate the disposal and environmental costs of Polystyrene/EPS.



---

# **“The economic and environmental cost of Polystyrene/EPS is enormous!”**

---

## **Chilltainers vs Polystyrene**

---

### **More Boxes**

**Fit up to 39% more boxes in an aircraft container with Chilltainers vs Polystyrene/EPS.**

---

### **Lower Storage Costs**

**Flat packs are highly space efficient and easily erect-able on demand.**

---

### **No Breakages**

**Super durable Chilltainers don't leak liquids (impermeable) and will not fracture and break in transit like Polystyrene/EPS.**

---

### **Direct Shipping Benefits**

**Direct shipping saves time and money and avoids re-packing in export markets.**

---

### **No Disposal Costs**

**Chilltainers are readily recycled versus the economic and environmental cost of paying to dispose of Polystyrene/EPS.**

---

### **Stylish surface**

**Retailers love the Chilltainer look - they can be displayed directly instore.**

## **Chilltainers is the solution**

**A recyclable, high performance alternative to Polystyrene/EPS that doesn't cost the earth.**

# Sizes & Specification

ABBE will provide a customised solution, whatever your requirements. Alternatively, we can also provide the following standard products.

## Home Delivery / Courier: Stocked Range Single Piece Chilltainers

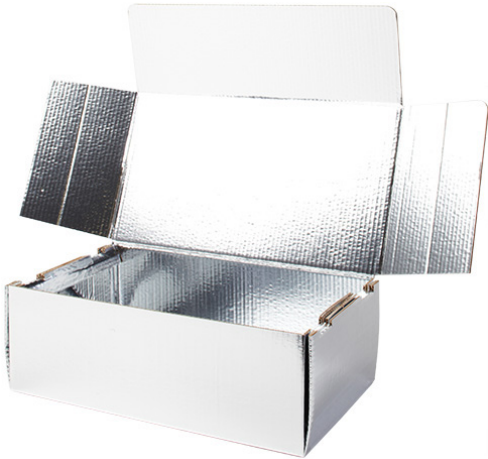
Small



Medium



Large



Lobster



Style	Dimensions (LxWxH) mm	Volume (Litres)	Internal Volume (m <sup>3</sup> )
HD Small	366x283x105	11	0.01088
HD Medium	366x283x140	14	0.0145
HD Large	519x290x175	26	0.02634
Lobster	550x318x181	36	0.03166

# Customising Chilltainers

Customising Chilltainers is as easy as customising a cardboard box. The possibilities are endless. Shown below are a few examples of boxes designs. Whether they are 1-piece, 2-piece, self-locking or glued, Chilltainers provide a durable, thermally efficient and attractive option for chilled packaging. Talk to us about your requirements, we're happy to help.

## Examples of Chilltainer Packaging

Salmon



Beverage Carry Box



Oysters



Tuna Large



**“Our own internal test results indicate that using Chilltainers - Thermal packaging can assist in maintaining food temperatures for up to 20% longer than a standard carton, which is great news for home delivery service”**

---

**Chilltainers are used to transport a wide variety of chilled, perishable products.**



**Meats**

Fresh, cured and chilled meats



**Home Deliveries**

By courier – meals, recipes, ingredients



**Dairy Products**

Cheeses, yoghurts, milk, cream and snacks



**Medical Supplies**

Pharmaceuticals, serums, vaccines etc.



**Crustaceans**

Lobster, crayfish and crab



**Seafood**

Fish – fillets or whole. Prawns, shrimps etc.



**Beverages**

Wine, beer and other chilled beverages



**Shellfish**

Oysters, scallops, mussels etc.



**Produce & Flowers**

Fresh produce and flowers

**Abbe Corrugated Pty Ltd**

23-49 Maffra Street,  
Coolaroo, VIC 3047

☎ 03 9301 8800

📄 03 9301 8899

✉ [sales@abbe.com.au](mailto:sales@abbe.com.au)



[www.abbe.com.au](http://www.abbe.com.au)



[www.chilltainers.com](http://www.chilltainers.com)